

## Going to Minack – A BRIEF GUIDE

### Where is it?



The Minack Theatre,  
Porthcurno, Cornwall,  
TR19 6JU  
Registered Charity No. 271483

Admin: +44(0)1736 810694  
Information and Box Office: +44(0)1736 810181  
Fax: +44(0)1736 810779

### How to get there

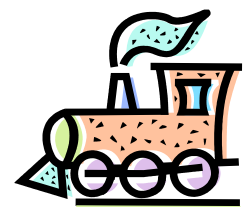
The Minack Theatre is located at the extreme west of the UK, 20 minutes from the busy port and town of Penzance, 15 minutes from picturesque Mousehole, 10 minutes from Lands End, 30 minutes drive from St Ives, 60 minutes from Truro and Newquay and 90 minutes by road from the world famous EDEN PROJECT at Bodelva, St Austell.

Follow the map to Porthcurno, at the seaward end of the valley go up the winding hill and the theatre entrance is on the left. Parking in the large car park is **FREE**.

**For SatNav users the postcode is TR19 6JU**

<http://maps.google.co.uk/maps/ms?msid=201398090536292360191.00045d4d5fa95fb58395b&msa=0>

- Drive – approx time 6/7 hours (If driving try to share a lift)
- Night train to Penzance from Paddington and organise to be picked up from Penzance (cheap if you book well in advance - but make sure you have lifts for when you are there!)
- Bus Penzance – Porthcurno – <http://porthcurno.mobi/timetable.php>



Many people travel during the day or overnight Friday as you are required to be at the theatre from 12 noon on the Saturday

## Where to stay

Cornwall Cottage websites and the list on the Minack site are helpful

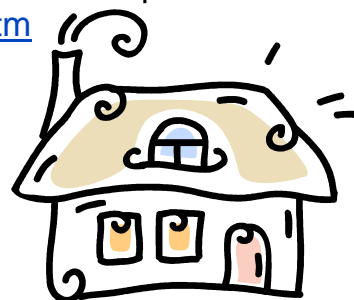
<http://www.minack.com/theatre-goers/accommodation.htm>

Anyone looking for individual B&B try

[www.seaviewhouseporthcurno.com](http://www.seaviewhouseporthcurno.com)

[http://www.cablestationinn.co.uk/coach\\_house.html](http://www.cablestationinn.co.uk/coach_house.html)

<http://www.intocornwall.com/accommodation/details.asp?name=The+Land's+End+Vineri+es>



Try to book either in Porthcurno valley itself, or on the road to St Levan, or between Treen & Sennen. Any further out requires a drive to and from the theatre that you might regret.

If in doubt ASK Clare and Wes! They know the area like a second home

## What to bring and the weather!!

**Your costumes** – they will be issued before we leave London. They will be your responsibility to get them to the Minack. It is a long way if you have forgotten anything!

### The weather

**It always rains on the first weekend** - you will get wet!

- Wellies / Walking shoes
- Waterproofs
- Fleeces



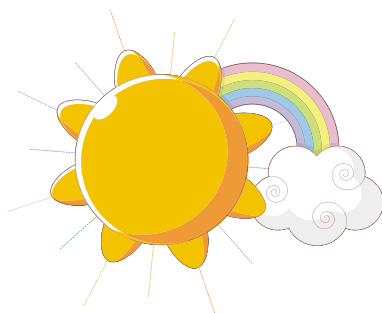
**It can be freezing cold at night** - you may get frost bite!

- Thermal underwear for under costumes where you can.
- Things to put on after the show to warm up after – gloves, boots, etc.

### You may get sunburnt!

It can be boiling hot during the day particularly at matinees.

- Sun hat
- High factor sun cream
- Wet suits
- Swim wear



## What is available locally – Very little!!

You can get a few basics in the village eggs, milk, newspapers, souvenirs and a good cream tea, but for any more substantial shopping it is a drive back towards Penzance to the nearest Boots / M & S therefore if you have forgotten your big knickers, false eyelashes or thermal bloomers it is a bit of a trek.

## Food Shopping

Tesco have a great on line delivery service in the area, book a delivery for when you arrive and one mid week or you have to drive approx 25 mins to the nearest Tesco back at Penzance. There are some great pubs for lunch.



## Contacting each other.

The mobile phone service in Porthcurno is terrible (so is wi-fi)! Always good to arrange to meet rather than rely on the phone service.

## What Happens During the Week

- Friday travel and settle in
- Saturday 12 noon Get in ( a chain gang down the 90 stone steps to get all the costumes props and music stands down to the stage ) and then a walk through ons and offs for everyone to get their bearings.
- Sunday from 10am run through / pm band call, evening full dress rehearsal.
- Monday call backs during the day if there were any disasters, if not it is a free day, First night curtain up 8pm (cast to be there 45mins before)
- Tuesday free day until curtain up – usually meet on Porthcurno beach.
- Wednesday matinee 2.30pm evening show 8pm
- Thursday free day until curtain up – another beach day!
- Friday matinee 2.30pm evening show 8pm then Get out ( a chain gang up the 90 stone steps to get all the props, costumes, music stands, back on to the van) and party until the sun comes up!!

(If you can book your accommodation until the Sunday and drive back then, all the better.)

There are lots of after show socials to enjoy during the week, you will need loads of stamina!!!!!!

